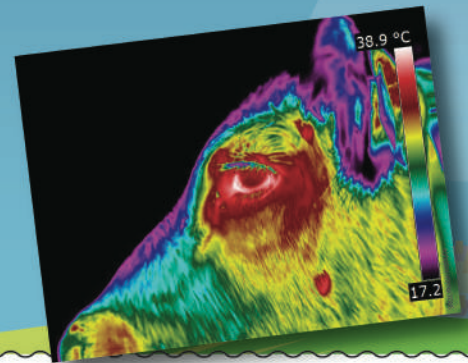




# Helping to ensure the highest animal welfare standards

Animal behaviour can be used to assess animal welfare, find solutions to welfare issues and to help people understand more about animals' lives on-farms.

Recent research advances are helping define what is needed for animals to live a 'good life', and how technology can be used to assess welfare and predict when welfare is threatened.



Scientists are using thermal imaging techniques to assess stress and welfare in livestock and detect some illnesses. Changes in blood flow associated with stress result in changes in surface temperature which is captured on the thermal image.



Play behaviour is common in young farmed animals. Research shows that litters of pigs vary consistently in how much they play - more playful litters grow faster!



Researchers are assessing the degree to which early life experiences affect animal welfare. Mothering reduces anxiety in ewes, promotes learning in the lamb and is a source of positive experiences for both mother and young, so improving their chances of survival.



## Livestock in the UK:

- 4.7m pigs
- 9.9m cattle and calves
- 33.3m sheep and lambs
- 167.6m poultry birds

Source: Defra, Agriculture in the UK 2015

