

The Co-op works together with a group of almost 200 dairy farmers from across the country who produce great quality milk and they are in our Co-op Dairy Group.

We know that our farmers give their cows plenty of good food, clean water, a comfortable place to live and look after them very well because we carry out checks on their farms. The milk produced by cows and dairy products like yogurts can play an important role in a healthy diet, they are excellent sources of calcium, which is needed for healthy strong bones and teeth!



Meet Grant, a Co-op Dairy Farmer
Grant is a young Dairy Farmer who is in our Co-op Dairy Farming Group. He farms with his brother Richard and they both work hard to make sure all their cows are happy and healthy!

Co-op Dairy Farming Group

Did you know that all these dairy products are made with milk from dairy cows?



Cheese



Custard



Ice cream



Milk

Fun facts about cows:

No two cows have the same pattern or spots - they are all unique!

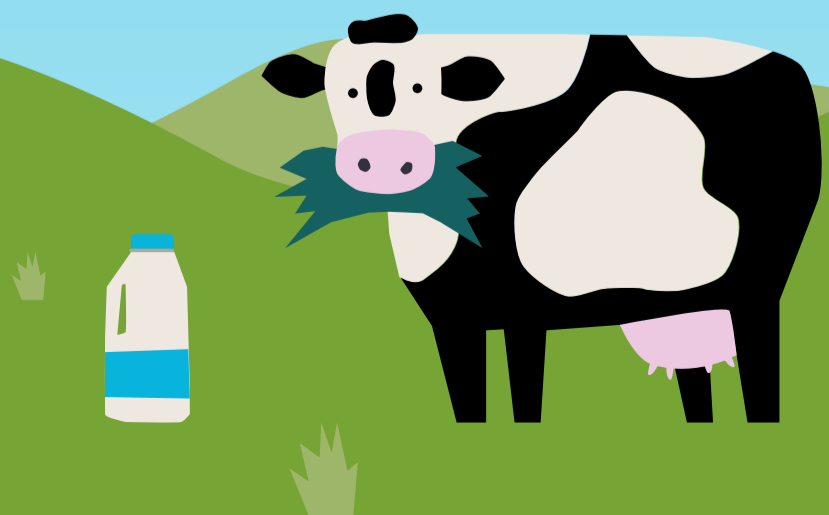
A cow has 1 stomach with 4 compartments.

Cows drink around 60 - 100 litres of water per day - that's the equivalent of a bathtub of water everyday.

A baby cow is called a calf.

Every cow has an animal passport showing where the cow was born and any other places it has moved to.

Cows have ear tags in their ears and they make it possible for us to identify each animal to keep accurate records for them.



Red Tractor Scheme

The Red Tractor logo on food and drink products means that farmers meet high standards and look after their animals and crops to produce food safely.

The farms are often checked to make sure they meet the high standards in place. To help support British Dairy Farmers you can look out for the Red Tractor logo on Milk and other dairy products like cheese and butter as it means that the milk has come from a British Dairy farm!

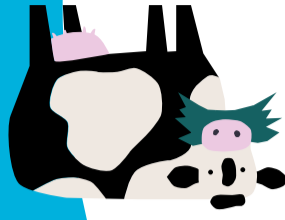
Write down which other products you see with the Red Tractor logo on in Co-op shops:

.....

.....

.....

All Co-op Dairy Farmers meet the Red Tractor standards which makes sure the animals are well looked after.



Farm to fridge

Dairy

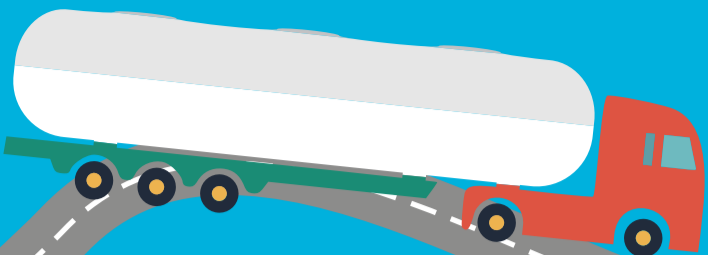
This booklet belongs to

.....

The journey of milk - From farm to fridge

On the farm

The milk you find in Co-op shops comes from the dairy cows that live in Britain. The cows will often be milked two or three times a day and the milk is then stored in a refrigerated tank until it is collected.

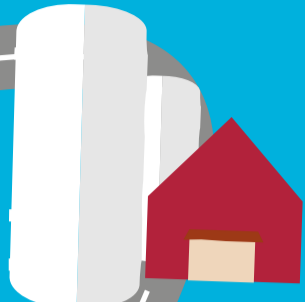


Collecting the milk

When the milk tanker arrives, the driver checks the milk and takes a sample from every farm to check it is safe to drink. The tanker is then filled and taken to be processed.

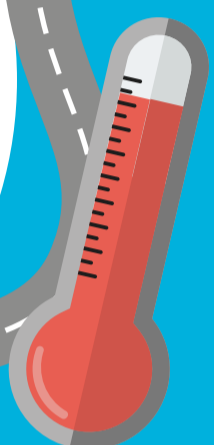
Dairy Processors

At the dairy processors, another sample is taken to ensure it is safe to be pumped into the silos. Silos are big refrigerated tanks that are filled with milk from different farms. One tan can hold 250,000 litres, this could almost fill a swimming pool!



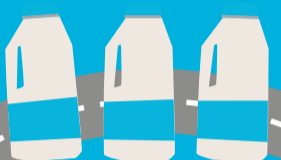
Pasteurisation

The pasteurisation process involves the milk being heated in a large container to very high temperatures very quickly and then the milk is cooled. This is to ensure the milk is safe to be consumed by killing any harmful bacteria. It is then processed into different types of milk; skimmed, semi-skimmed and whole.



Packing

The milk is then filled into plastic bottles or cartons by machines. The tops of the bottles are colour-coded to show which type of milk is in them. The bottles are then loaded onto a refrigerated lorry to be taken to Co-op shops.

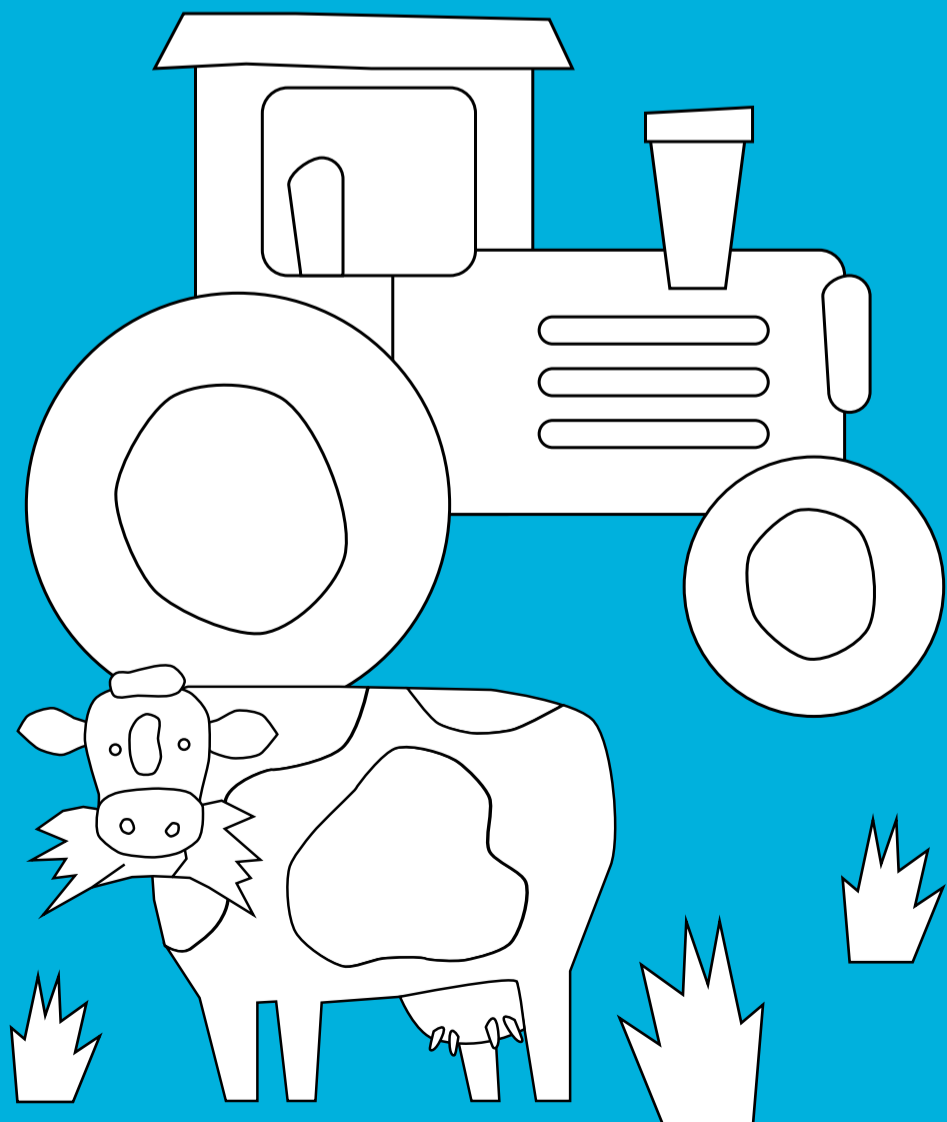


Delivery

The milk is unloaded off the lorry and taken in store. This is where the Co-op customers purchase their milk to drink, put in cereal or cook with!



Colour in the farm scene



Can you find all the cow and dairy related words?

E	C	H	E	E	S	E	Q	D	B	P	J	L	I	H
R	Z	Q	G	W	N	M	F	A	R	M	I	N	G	I
O	D	P	R	H	L	E	Z	X	T	Y	U	A	O	G
G	A	H	A	C	R	E	A	M	F	S	E	V	B	H
D	I	R	Z	I	P	R	Q	Z	B	Y	V	F	F	S
F	R	E	I	D	S	X	W	C	Q	O	P	A	I	T
L	Y	K	N	C	D	E	Q	R	B	G	C	R	J	A
K	J	P	G	E	F	W	X	E	L	U	H	M	T	N
B	R	B	V	S	W	O	C	A	D	R	W	E	L	D
U	A	P	F	S	D	Q	X	M	G	T	P	R	A	A
T	B	R	I	T	I	S	H	E	C	R	A	S	I	R
T	O	Z	B	E	A	M	N	T	D	P	Q	B	K	D
E	E	X	I	L	K	L	I	M	F	W	C	I	G	S
R	R	K	C	W	N	L	P	E	S	Z	V	E	T	Q
F	X	T	R	A	C	T	O	R	J	W	L	L	U	B

- Cream
- Dairy
- Farmers
- Farming
- Grazing
- High Standards
- Milk
- Tractor
- Yogurt
- British
- Bull
- Butter
- Cheese
- Cows
- Cream